

PARENT ORIENTATION

FABRA OFFICE STAFF



Leigh Ann Pierce – Attendance

Terri Byers – Registrar

Rachel Thompson– Principal’s Secretary

Terry Heyroth - Nurse

Sami Gillette – Assistant Principal

Jennifer Howell – Counselor

Officer Chavez - School Resource Officer

Troy Latiolais– Principal

CAMPUS INFORMATION

- Original Fabra built in 1948 – Rich Culture and Traditions
- Bond passed in 2013
- School sits on 19.6 Acres and is 97,400 square feet
 - Indoor and Outdoor Learning Space
- 850 Student Capacity – Current Enrollment 600
- 100+ Wireless Access Points - 1 to 1 I pads & Chromebooks (Grades 3-5)
- Designed with Neighborhoods and Flexible Learning Areas
- Safety Features
- **Shade Canopies coming to the courtyard**
- **New surveillance system campus wide**



First Floor Plan

21ST CENTURY FLEXIBLE LEARNING SPACES

- Give teachers choices in the ways they interact with students.
- Provide more opportunities for social and collaborative learning.
- Students work at tables, floor, desks, small group, standing, sitting, etc.
- Multidisciplinary Learning
- Project Based Learning
- Technology
- Enhances individualized, targeted learning
- Does not replace traditional learning space



JENNIFER HOWELL FABRA COUNSELOR

- Works with all students, families, and staff to encourage a safe school climate
- Helps students who are struggling
- Bridges families and community resources
- Listens and Helps



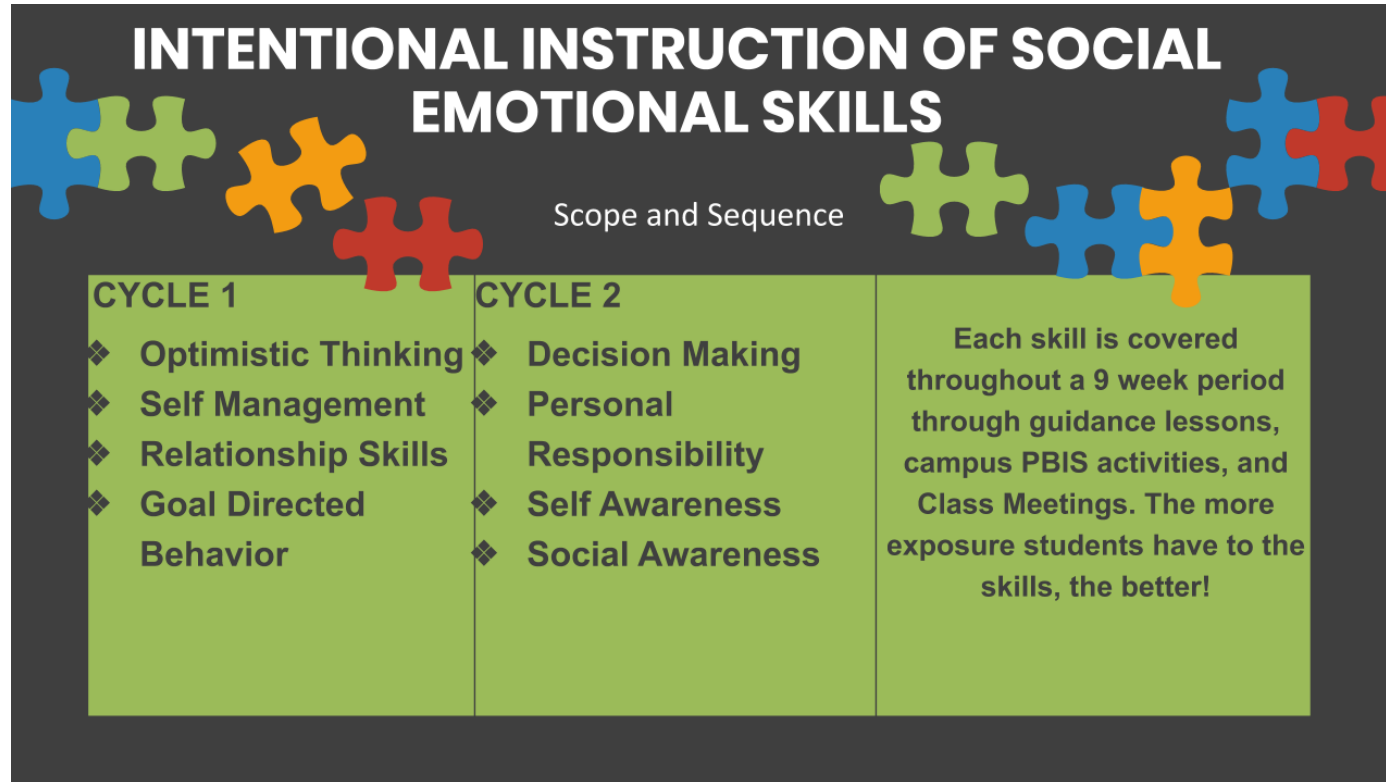
The Whole Child Initiative



"We live in a global economy that requires our students to be prepared to think both critically and creatively, evaluate massive amounts of information, solve complex problems, and communicate well. A strong foundation in reading, writing, math, and other core subjects is still as important as ever, yet by itself is insufficient for lifelong success."

-ASCD.org

THE FOUR SKILLS....



C.A.M.P CLASSES

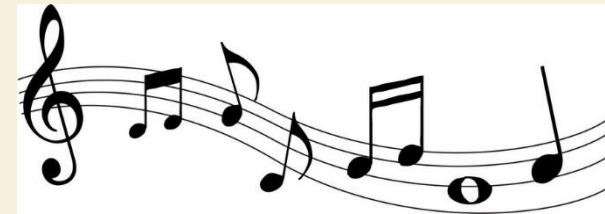
Computer

Art

Music

P.E.

- **6 day rotation**
- **Students in Mixed Groups**
- **Will have P.E. every other day**





CLUBS & ACTIVITIES

- After School Choir (The Falconeers)
- Student Council
- Destination Imagination
- Safety Patrol
- Environmental Club
- KFES – New Station
- Science Club
- Board Game Club



FABRA FAMILY NIGHTS

Technology Night

Fitness Nights

Literacy Night

Math & Reading Support Nights

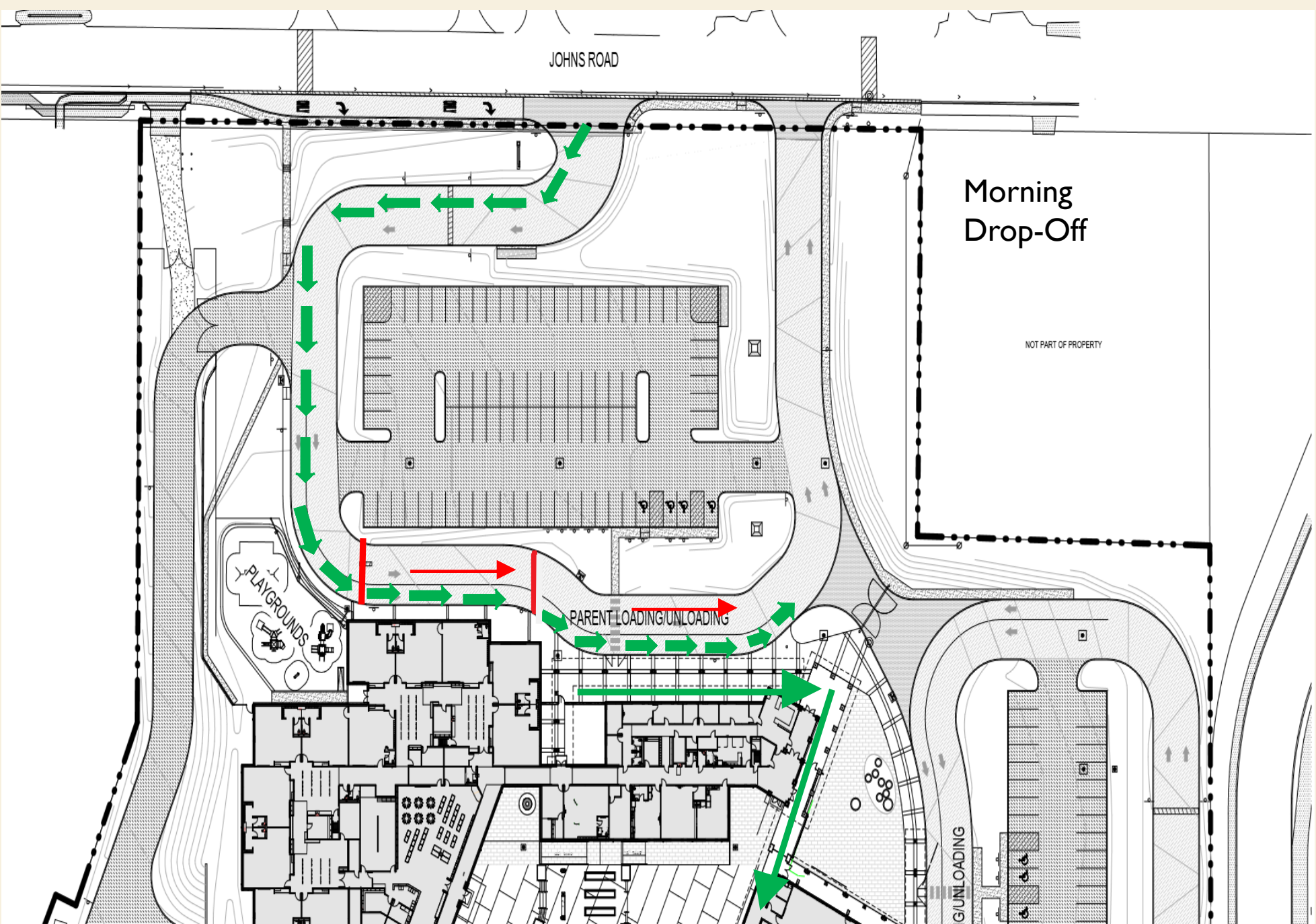
Family Art Night

Daddy Daughter Dance



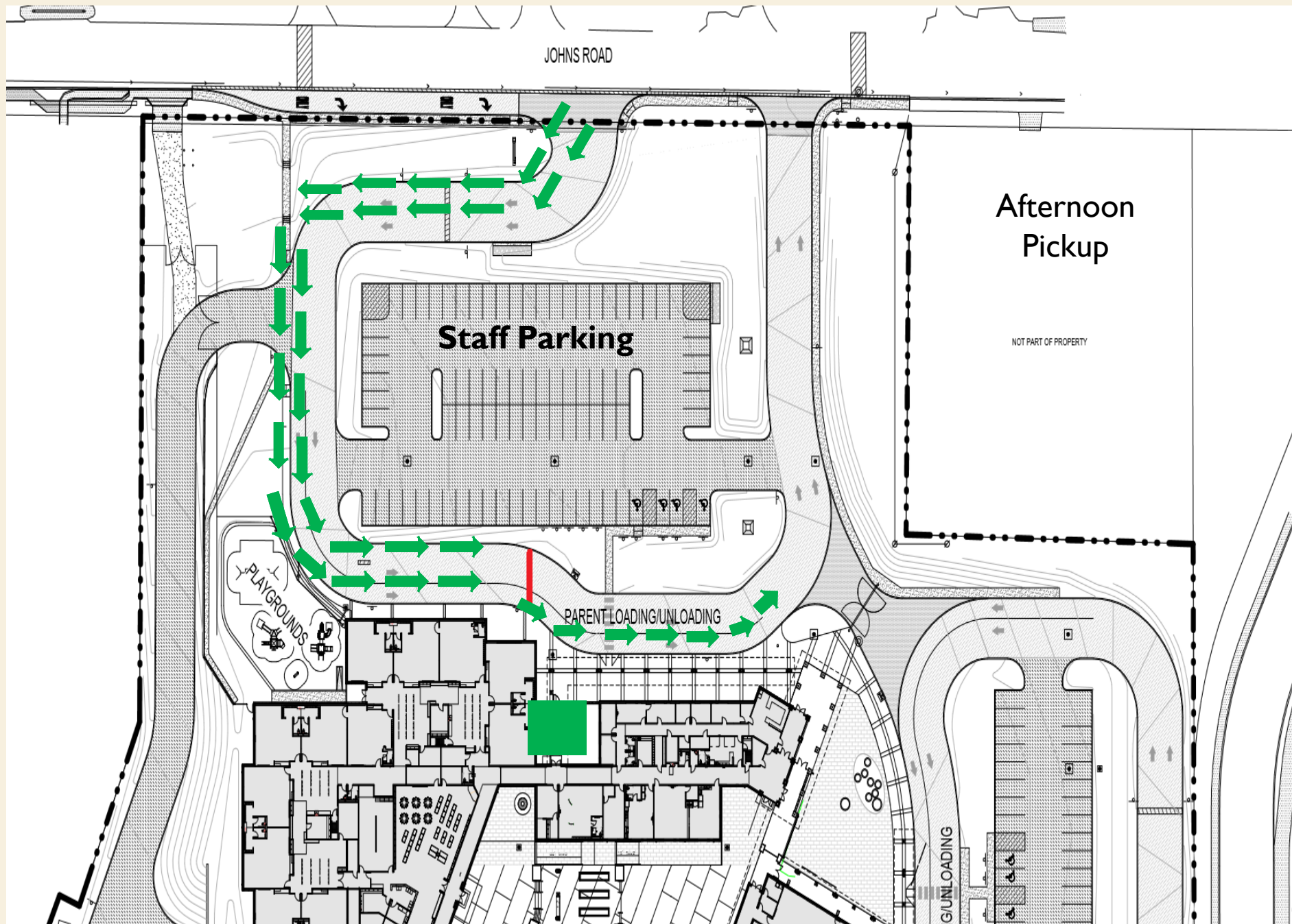
MORNING STUDENT DROP-OFF

- Gates will open at 7:00 AM
- Students may be dropped off from 1st Sign to Front Entrance
- No Drop-offs on Left Lane.
- Any delays, please move to parking lot to allow flow of traffic.
- Once student is dropped off, merge to left lane safely to exit.
- Parents may use parking lot to walk students up. No drop off in parking lot.
- **Lattimore Parking Lot used for parking and walking students across.**
- Parents allowed to walk students to classroom on 1st day.
- Beyond 1st day, limited to cafeteria, unless an appointment is made with teacher.



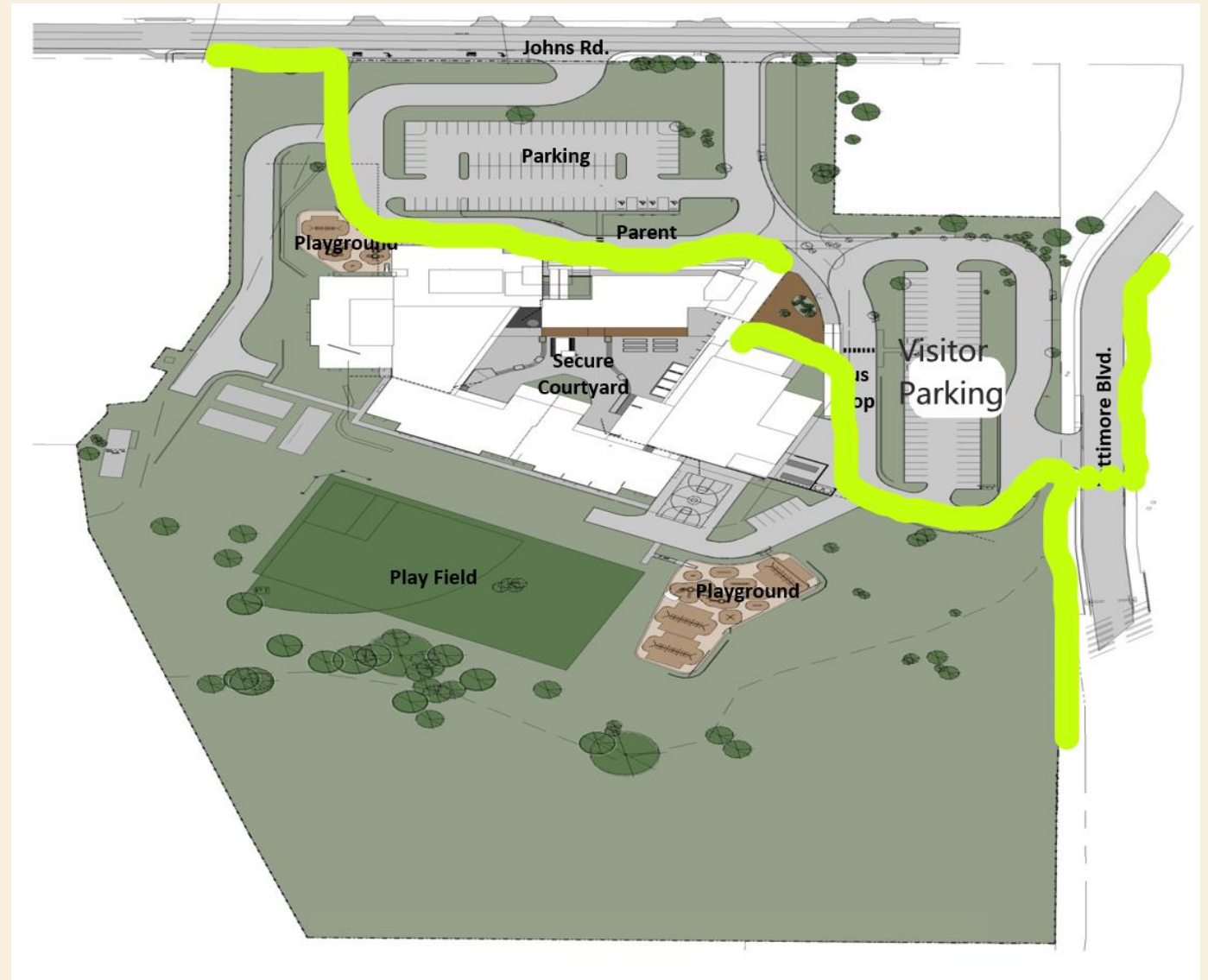
AFTERNOON PICKUP

- Capacity of approximately 70 vehicles in loop.
- Will fill two lanes up to 2nd drop-off sign.
- Vehicles will then enter pickup locations 7 at a time, directed by staff member.
- All will receive a **BLUE** car rider tag with grade and name. Must show to staff member calling names.
- We will not release students to anyone without a tag. You must park and allow time for us to check identification.
- Thank you for your patience on the first day of school.



WALKERS & BIKERS

- Remind students of general crosswalk and safety guidelines.
- PM dismissal staff will guide bikers and walkers to sidewalk.
- Bikers will walk their bikes once they are on campus.
- Bike racks located by bus loop.
- Skateboards not allowed.
- Students enter through gated area into courtyard or through cafeteria.



PARENT HANDBOOK

[HTTPS://WWW.BOERNEISD.NET/FES](https://www.boerneisd.net/fes)

Highlights

- Dress Code
- Transportation
- Attendance & Tardies
- Visitors
- Nurse
- Birthdays
- Cell Phones
- Grading & Late Work Policy
- Check Outs
- Lost & Found



All visitors must **ALWAYS** check in through the front office.



Visitors must have a scheduled appointment with teacher to visit the classrooms.



Lunch time visitors are welcome to sit with their student inside the cafeteria or at the table in the courtyard.



Students can invite **ONE** friend to have lunch. Please refrain from letting students run in the courtyard visits. For safety, only take photos of your child during lunch visits.

VISITING CAMPUS

DISCIPLINE

- Classroom Management Plans
- Positive Behavior Reinforcement
- Communication
- Restorative Discipline
- Documented Offense System
- Office Referral



INCENTIVES & REWARDS

Spirit Sticks

Character, Perfect Attendance,
Announcement Recognitions

Attendance Rallies

9 Weeks Awards Assemblies

SUPPORTING FABRA CAMPUS FUNDRAISERS

- Falcon Funds! – New this year!
- Fall Festival
- Fiesta Walk-a-thon
- Marquee Message

Falcon Funds

For the first time our Fabra family is asking you to say YES to our Falcon Funds program. The Falcon Funds program is a direct request for donations in lieu of a school-wide catalog sale such as our previous pie sale.

We have been listening! Many parents dislike catalog fundraiser sales with only 40% of the income going to the school. We want to keep 100% of our money here at Fabra for our students and staff.

The Falcon Funds program proceeds will be used to fund activities which make school more meaningful and enjoyable for our students by rewarding their efforts and successes while providing teacher support.

YOUR DONATION SUPPORTS

Field Trips	Behavior Incentives	Student Recognitions	STAAR Snacks
Student Academics	Character Incentives	STAAR Party	School Assemblies
Teacher Initiatives	and so much more		

**100% of your donation goes directly to
Fabra Elementary through Falcon Funds!**

Our 2019-2020 goal is \$15,000!

SAY YES!

INVEST IN MEANINGFUL SCHOOL EXPERIENCES THROUGH FALCON FUNDS

To donate, please complete the bottom of this form and return it to the front office with checks made out to Fabra Elementary School. You may also mail your Falcon Funds check to Fabra's address listed below. *Make Falcon Funds checks payable to Fabra Elementary School.*

Fabra Elementary
723 Johns Road
Bourne, TX 78006

Name of Student (s) _____
Parents Names _____
Mailing Address _____
Grade (s) _____ Daytime Phone _____
Amount of Gift \$ _____ Method of Payment _____



Your donation is greatly appreciated by the entire Fabra staff!

*Please note that our PTO will still be hosting our annual Walk-a-thon even though it helps fund many incentives, grants, campus improvements and much more. Falcon Funds is the only one-time, school-initiated fundraiser at Fabra. Please consider helping us reach our goal. Thank you.



FALCON FATHERS

- *Calling all Dads, Step-Dads, Grandfathers, Uncles, Brothers, & Father Figures!*
Fridays - Full Days

- KFES News Lunch Monitor
- Recess Monitor (Yes you can play!)
- Library Time
- Discovery Lab
- Garden Beds

- PE Class
- Small Group Reading
- Morning Drop-off Hi-Fives!
- Neighborhood Area Project Support
- Courtyard Activities

BENEFITS

- Role Models
- Campus Security
- Student Self-Esteem Build
- Spend time with own child

- Overall Campus Culture & Climate
- Bullying
- Community Building
- Help students learn!

ALL PRO DADS

MONTHLY MORNING
MEETINGS @ 6:45 AM



Join Fabra PTO!

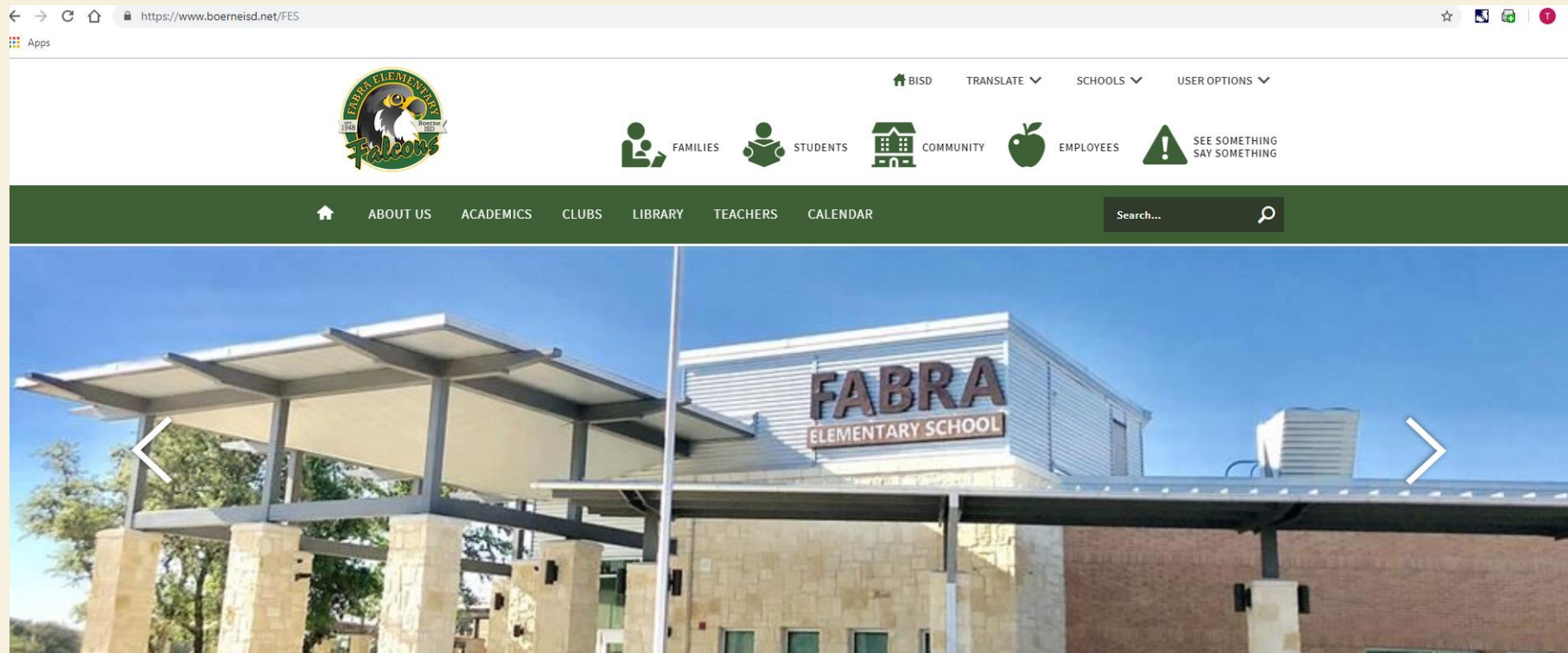
www.fabrapto.com



Find us on Facebook!

VISIT OUR WEBSITE!

[WWW.BOERNEISD/FES](https://www.boerneisd.net/FES)





UPCOMING EVENTS

First Day of School:

August 14th

Tissues and Tacos :

First day of school for Kinder Parents

New Families Breakfast:

August 23rd – 8:00 am (Library)

Grade Level Orientations:

August 26th – 5:30 – 6:30pm Pre-K – 2nd

August 26th – 6:30 – 7:30pm 3rd – 5th

COMMUNICATION

Newsletters

School Way App

School Connect

Teacher Websites and Voicemail

Parent Conferences

Connect with Mr. Latiolais!

Facebook - @mrlatiolais

Twitter - @fabraprincipal

Come right on in!



Mr. Latiolais - Fabra
Elementary
Principal

@mrlatiolais

Home

About

Photos



Get personalised

Learn which types of

Get Started

